

Dalmia
cement
FUTURE TODAY

Dalmia
INFRA PRO



LAYING THE FOUNDATIONS OF
A STRONGER TOMORROW



DALMIA CEMENT: FUTURE TODAY

Dalmia Cement, a subsidiary of the Dalmia Bharat Group has been a pioneer in cement manufacturing since 1939. Our constant focus on innovation, co-creation, and sustainability has helped us grow and become the world's greenest cement* manufacturer. We take pride in being the first in line to have the least carbon footprint compared to other cement companies across the world.

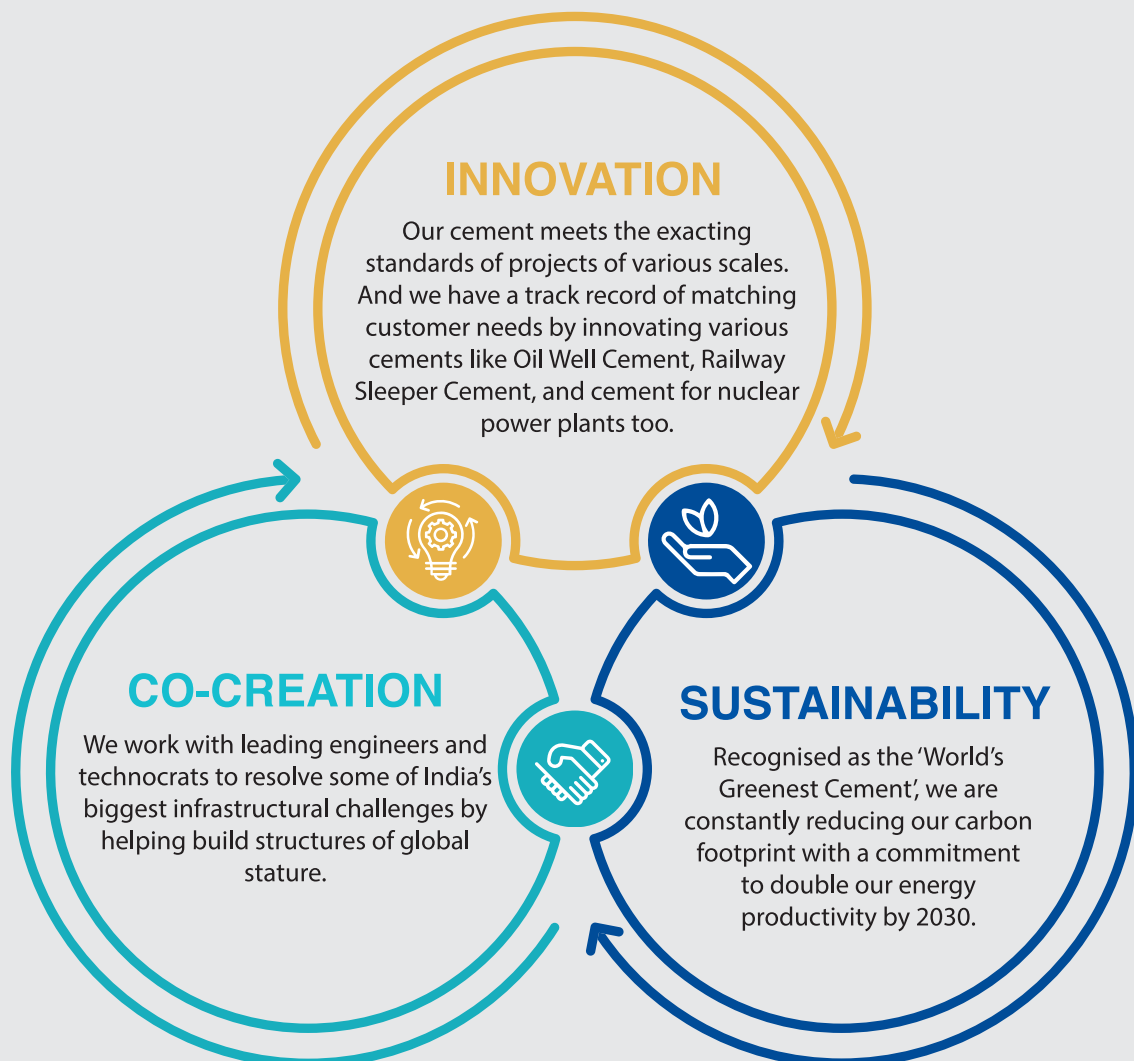
For eighty years, Dalmia Cement has been committed towards delivering futuristic, advanced products to propel the growth of India. This legacy of progress is being continued by Dalmia Infra Pro. Especially designed for large scale projects, it stands for innovative thinking backed by futuristic technology to deliver a world-class product. Known for its consistency, high strength, and performance, Dalmia Infra Pro has delivered successful projects of national stature and left our consumers satisfied.

*As per the CDP Global Cement Sector Report, 2018

OUR PHILOSOPHY: FUTURE TODAY

Future Today is the essence of Dalmia Cement's philosophy. It's at the core of everything we do. The intensive research and development carried out at our state-of-the-art Future Labs helps us formulate special application products by combining robotic technology and decades of expertise. Every product innovation gets conceptualised and developed here. It is then passed through stringent strength and quality tests - making sure that they're designed to last a lifetime. All of this combined with having a constant futuristic outlook makes us a global leader in the cement industry.

Our philosophy is based on the following three pillars, defining what we live by:



OUR MILESTONES



● **1939**

Founder Jaidayal Dalmia establishes one of the first cement plants in India at Dalmiapuram.

● **1950**

Dalmia Cement starts the production of super grade cement from its Rajgangpur plant, for building the Hirakud Dam.

● **1973**

Our flagship company OCL India Ltd pioneers in the development of Railway Sleeper Cement for Indian Railways.

● **1984**

Dalmia Cement Bharat Limited (DCBL) becomes the first company to manufacture Oil Well Cement (OWC) in India.

● **2013**

Dalmia Cement expands its footprint in the North-East by acquiring two plants in Assam and one in Meghalaya.

● **2015**

With the total production capacity exceeding up to 24 million tonnes a year, Dalmia Cement becomes India's fourth largest cement company.

● **2015**

Dalmia Cement becomes one of the major suppliers for the Chennai Metro.

● **2016**

Dalmia Cement becomes the first cement firm in the world and the second Indian company to join the exclusive RE100* group.

● **2017**

Made with Dalmia Cement, India's longest river bridge, Dhola Sadiya, opens in the North-East.

● **2018**

Dalmia Cement is globally ranked No. 1 by CDP and has achieved the lowest carbon footprint in the cement sector globally.

● **2019**

The company sets a goal to become carbon negative by 2040.

*RE-100 is the global corporate renewable energy initiative bringing together large and ambitious businesses committed to 100% renewable energy.

OUR MANUFACTURING PRESENCE



We have a total manufacturing capacity of 26.5 MnT



OUR ACHIEVEMENTS AND COMMITMENTS

Dalmia Cement is the World's Greenest Cement manufacturer and has the lowest carbon footprint compared to the rest of the cement companies of the world.

- Being a water positive company, we give back 5 times the water that we use.
- We're the 1st cement company to join the RE100 initiative globally.
- Our goal is to completely replace fossil fuel with renewable biomass and alternate energy by 2035.
- Committed to doubling our energy productivity by 2030, we're the first cement company in the world to join EP100.*
- We're the first cement company in the world to set a goal to achieve a carbon negative footprint by 2040.

*EP100 brings together a growing group of energy-smart companies improving their energy productivity to lower their emissions and improve their competitiveness.

DALMIA INFRA PRO: THE FOUNDATIONS OF A STRONGER TOMORROW

80 YEARS OF TRUST



With a legacy of over 80 years, Dalmia Cement is known for continuous innovation. We are the pioneers in developing various speciality cements and have been the trusted brand used in some of India's most prestigious infrastructure projects.

ROBUST PRODUCT PERFORMANCE



Dalmia Infra Pro cement is made with superior ingredients and the quality of cement is ensured by a robotic quality control process at every stage of manufacturing. That is why, our cement meets the exacting standards for projects of various scales.

ENGINEERED TO PERFECTION FOR ALL MIX DESIGNS



Dalmia Infra Pro offers optimal particle-size distribution and consistent quality. This makes our cement compatible with all types of admixtures used in the industry.

EFFICIENT ON-SITE TECH SUPPORT



Dalmia Infra Pro cement provides on-site expert technical support for producing the desired grade of concrete for your project. Our team of technical service experts provide reliable services as per the project requirements.

DELIVERY AS PER COMMITMENT



We understand the value of timely project completion. Our strong in-built processes are designed to ensure that the delivery of cement and services are as per the project requirements.



DALMIA CEMENT FUTURE LABS: THE CENTRE OF PIONEERING DEVELOPMENTS

Dalmia Cement is a research-led cement manufacturing company. Our mission was to introduce the world to path-breaking construction technologies through a dedicated innovation and research centre. That's why we have commissioned a research and development laboratory in Chennai, for delivering advanced and futuristic products to our customers. This infrastructure was the first-of-its-kind among Indian cement manufacturing companies. It comprises of various sections like; a customer cell, a chemical, physical and concrete lab.

It is fully equipped with a state-of-the-art machinery for complete tests of concrete, cement, and aggregates. A full-fledged team of research experts work end-to-end for strengthening Dalmia Cement's competence in producing superior and customised cement grades. From product testing and development, to real-time market feedback, the research centre produces the best quality of cement that perfectly matches the customer's needs.

OUR PORTFOLIO

ORDINARY PORTLAND CEMENT (OPC)

Dalmia Infra Pro OPC 43 and OPC 53 are made using high quality clinker and gypsum. They are far superior than BIS 269:2015 specifications. They provide better compatibility with any type of chemical admixtures, perform better with M-Sand in concrete and plaster, provide superior ultimate strength in concrete, and reduce the formation of plastic shrinkage cracks.

Dalmia Infra Pro OPC 43 and OPC 53 have emerged as the top choice for engineers and engineering companies engaged in the construction of mega projects like national highways, bridges, transmission lines, power plants, industrial and residential structures. Dalmia Infra Pro OPC 53 is best suited for all high strength concrete applications such as pre-stressed elements, pre-cast structural elements, high load bearing structures and bridges. It is preferred for ready mix concrete as it is compatible with all chemical admixtures.

PORTLAND POZZOLONA CEMENT (PPC)

Dalmia Infra Pro PPC is made with specially processed fly ash, high quality clinker, and gypsum, as per IS 1489 (Part I):2015. The specially processed fly ash improves workability at a reduced water-cement ratio, provides excellent ultimate strength, reduces permeability, and helps resist sulphate attack and alkali aggregate expansion action.

It is ideally suited for all structures that are exposed to sulphate reactive environments such as sewage treatment structures, foundations, dams, canals, off-shore structures, concrete roads, bridges, and high-rise commercial buildings.

PORTLAND SLAG CEMENT (PSC)

Dalmia Infra Pro PSC is made with superior quality clinker, glass rich GGBFS* and gypsum as per IS 455:2015. High glass GGBFS inter-ground with clinker and gypsum ensures better particle-size distribution which is mainly required for early initiation of pozzolanic reaction. The optimised content of gypsum provides better admixture compatibility along with good early age concrete strength. It is these special properties that have attracted large contractors and builders in India.

The benefits offered by Dalmia Infra Pro PSC are:

1. Good workability and better admixture compatibility
2. Excellent initial and higher ultimate strength
3. Better rate of strength gain
4. Reduced plastic shrinkage concrete
5. Rich glass content helps in resistance against chloride and sulphate attacks in concrete
6. Reduced reinforcement corrosion in RCC structures

PSC is ideally suited for all coastal, residential, and commercial concrete structures, off-shore structures, dams, bridges, chimneys, and underground structures.

*GGBFS: Ground Granulated Blast-Furnace Slag

COMPOSITE CEMENT (CC)

Dalmia Infra Pro Composite Cement is a ternary blended cement produced by inter-grinding clinker with high reactive fly ash, Ground Granulated Blast- Furnace Slag (GGBFS) and gypsum, as per IS 16415:2015. The benefits offered by Dalmia Infra Pro Composite Cement are:

1. Cohesive and easy to work with
2. Good initial strength gain in concrete
3. Excellent long-term strength which increases the life span of concrete structures
4. Better resistance against chloride and sulphate attacks
5. Less penetration of moisture, O₂, and CO₂ which reduces corrosion of reinforcement.
6. Less thermal and shrinkage cracks in concrete.

Dalmia Infra Pro Composite Cement can be used for all residential and commercial buildings, water reservoirs, sewage structures, pavements, and coastal structures.

SPECIALTY CEMENTS



Mumbai High- ONGC

OIL WELL CEMENT (OWC)

Dalmia's Oil Well Cement is the first cement in the country to receive the prestigious American Petroleum Institute (API) certification. Dalmia Cement is the largest, oldest, and most reputed supplier of OWC in the country. Oil Well Cement is used for cementing the walls of 'on-shore' and 'off-shore' oil wells of reputed companies such as ONGC, Reliance, Schlumberger, and Halliburton. Made under strict quality control systems, it has remained on the select list of international OWC manufacturing companies that have met the tough API standards.



SULPHATE RESISTING PORTLAND CEMENT (SRPC)

Dalmia Cement is India's largest manufacturer of SRPC. It is specially designed to provide high levels of concrete performance and structural integrity in highly aggressive sulphate and acidic environments. Such environments have the potential to damage the concrete made from regular cement. The usage of this cement significantly improves later-age concrete strengths. It also prevents sulphate attack and its low heat of hydration helps avoid shrinkage cracks. It is widely used in constructing chemical industries, marine structures, bridge piers, sewage treatment plants, sulphate bearing soils, etc. Dalmia Infra Pro Sulphate Resisting Portland Cement conforms to IS: 12330-1988.



RAILWAY SLEEPER CEMENT

Dalmia Cement is the pioneer in developing Railway Sleeper Cement in India, based on special specifications and requirements of the railways. Dalmia Infra Pro Railway Sleeper Cement (OPS 53S) confirms to IS269-2015. Its negligible chloride content protects it against corrosion. Its high fineness enhances workability, and high early strength enables improved mass production cycle. Rated as the best of its kind, Dalmia Railway Sleeper Cement is supplied to all major railway sleeper manufacturers in India. It is also used in concrete elements or high-rise buildings and pre-cast elements where early strength is required.

The cements listed above aren't available in all regions. For more information, please reach out to the nearest Dalmia Cement sales office.

APPLICATIONS

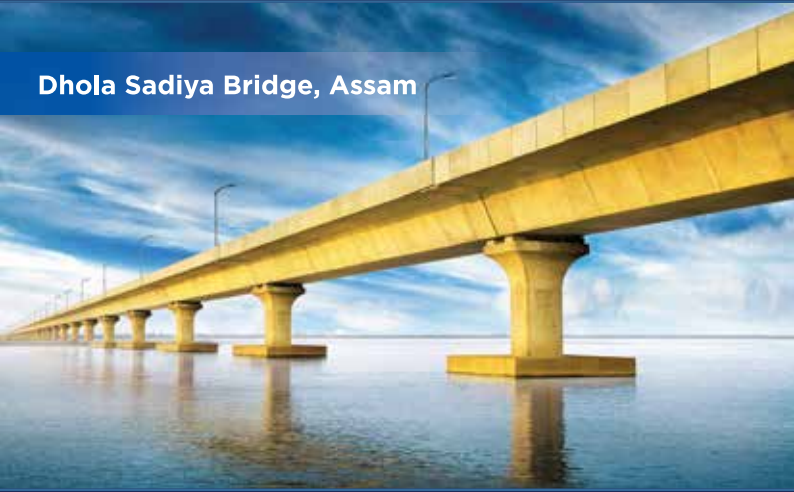
A. LARGE INFRASTRUCTURES:

- i. Hirakud Dam, Odisha
- ii. Salt Lake Stadium, West Bengal
- iii. Nuclear Power Corporation, Tamil Nadu



Hirakud Dam, Odisha

Dhola Sadiya Bridge, Assam



B. ROADS AND BRIDGES:

- i. Mahatma Gandhi Setu, Bihar
- ii. Dhola-Sadiya Bridge, Assam
- iii. NHAI Shillong Bypass, Meghalaya
- iv. Zuari Bridge, Goa

Chennai Metro, Tamil Nadu



C. RAILWAYS AND METROS:

- i. Chennai Metro, Tamil Nadu
- ii. Kochi Metro, Kerala
- iii. Lucknow Metro, Uttar Pradesh
- iv. NFR Railway, Manipur

D. INDUSTRIAL PLANTS:

- i. Tata Steel Kalinganagar, Odisha
- ii. Daimler Chrysler, Tamil Nadu
- iii. MRF Tyres, Tamil Nadu

Tata Steel Plant, Odisha



E. AIRPORTS AND PORTS:

- i. Kannur International Airport, Kerala
- ii. Advance Military Landing Grounds, Arunachal Pradesh
- iii. Dabolim Airport, Goa
- iv. Pokhra Airport, Nepal

Port Blair Airport, Andaman



Science City, West Bengal



F. EDUCATION AND PUBLIC INFRASTRUCTURES:

- i. Science City Kolkata, West Bengal
- ii. ISRO Sriharikota, Andhra Pradesh
- iii. IIM Kozhikode, Kerala

G. COMMERCIAL AND REAL ESTATE:

- i. Bhartiya City and Milestone, Karnataka
- ii. Lulu Convention Centre, Kerala
- iii. Radisson Blu, Assam

Lulu Convention Center, Kerala



H. CEMENT PRODUCTS AND PRECAST APPLICATIONS

Our cement is used in various precast applications like hollow core slabs, columns, beams, wall panels, segmental bridge systems, concrete sewer pipes, etc.





CORPORATE OFFICE

Dalmia Cement (Bharat) Limited, 11th and 12th floor,
15 Barakhamba Road, New Delhi, 110001 | Toll free no.: 1800 2020
Email ID: customercare@dalmiacement.com

Follow us on [Twitter](#) [Facebook](#) [Instagram](#) /mydalmiacement